



**Shangri-La hotel**

---

PARIS

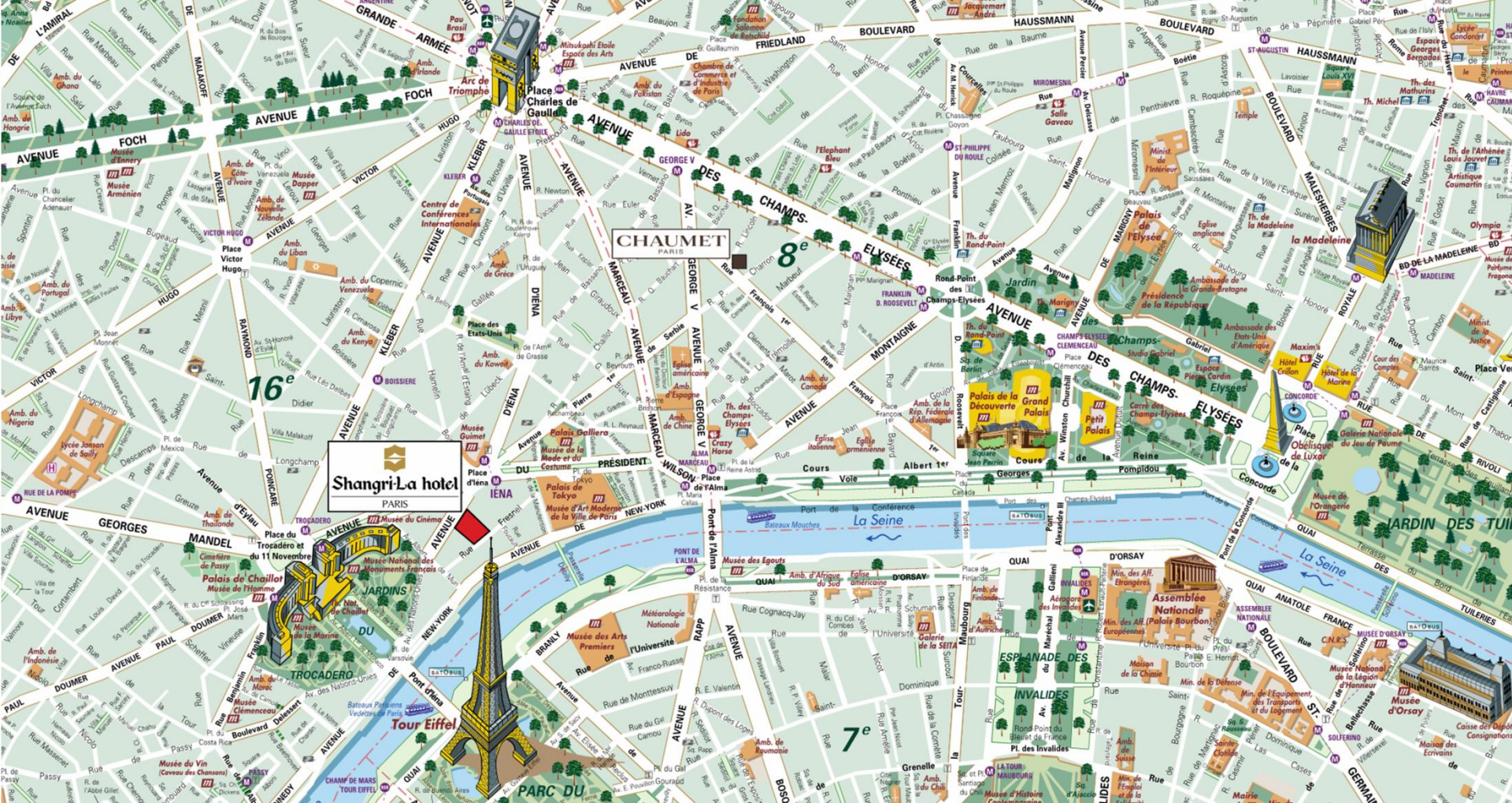
# SHANGRI-LA HOTEL, PARIS

## HOTEL PRESENTATION

July 2015

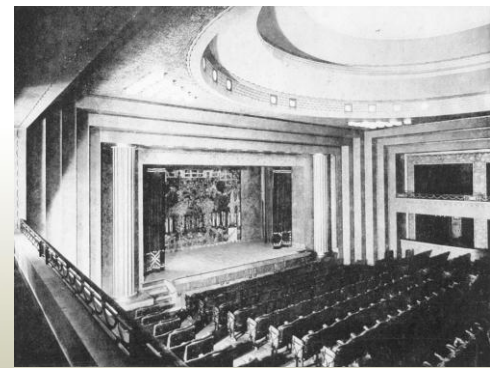
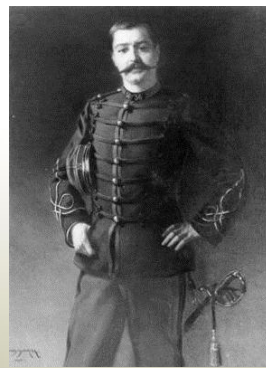
Shangri-La Hotel, Paris – Sales and Marketing Department





## A Refined Setting in the Heart of Paris's Most Chic Neighborhood

Nestled in the refined, residential 16th arrondissement between the Place des États-Unis, Place d'Iéna and the iconic Trocadéro high on Chaillot Hill, the hotel is located across the Seine from the Eiffel Tower. The area has one of the highest concentrations of museums in Europe.



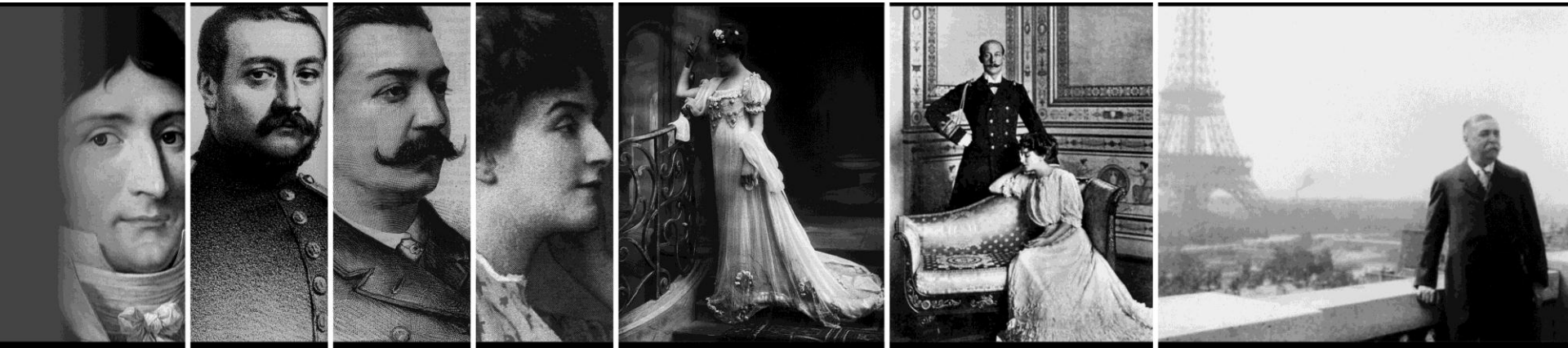
*SHANGRI LA HOTEL PARIS - 1896 - A PRINCELY ESTATE*

# Shangri La Hotel Paris - A Princely Estate

Built between 1892 and 1896 by Emperor Napoleon Bonaparte's grandnephew, Roland Bonaparte, Paris's last Napoleonic "palais" housed the family heirlooms and scientific library of the prince, who was one of the leading botanists of his time.

His daughter, Marie Bonaparte (who became Princess George of Greece), spent her teenage years there.

It is this historical monument, whose eclectic style is clearly characteristic of the belle époque era, that provides the setting for the Shangri-La group's first European palace hotel.





SHANGRI-LA HOTEL, PARIS – A Princely Estate



HOTEL LOBBY



BAR LOUNGES





BAR LOUNGES



LE GRAND ESCALIER



# ROOMS & SUITES

# Shangri La Hotel Paris

## 101 Rooms and Suites

65 Rooms, 33 Suites and 3 Signature Suites

Categories	Rooms	Avg. Area (m <sup>2</sup> /ft <sup>2</sup> )
Superior Room	9	36 / 385
Deluxe Room	25	40 / 430
Premier Room	17	45 / 485
Eiffel Tower view Room	9	45 / 485
Terrace Eiffel Tower view Room	5	50 / 535
Deluxe Suite	11	60 / 645
Duplex Suite	5	80 / 860
Eiffel Suite with partial view	5	60 / 645
Terrace Suite	6	70 / 750
Duplex Eiffel Tower view Suite	3	70 / 750
Duplex Terrace Eiffel Tower view Suite	2	70 / 750
Terrace Eiffel Tower view Suite	1	70 / 750
La Suite Chaillot	1	110 / 1,175
La Suite Shangri-La	1	120 / 1,290
La Suite Impériale	1	275 / 2,960





DELUXE ROOM - 40 sqm / 430 sqf



BATHROOM – DELUXE ROOM



PREMIER ROOM - 45 sqm / 485 sqf



PREMIER ROOM - 45 sqm / 485 sqf





EIFFEL TOWER VIEW ROOM - 45 sqm / 485 sqf



TERRACE EIFFEL TOWER VIEW ROOM - 50 sqm / 535 sqf



DELUXE SUITE - 60 sqm / 645 sqf



DUPLEX SUITES - 80 sqm / 860 sqf



TERRACE SUITE - Approx. 70 sqm / 750 sqf of luxury.



DUPLEX TERRACE EIFFEL TOWER VIEW SUITE - 70 sqm / 750 sqf



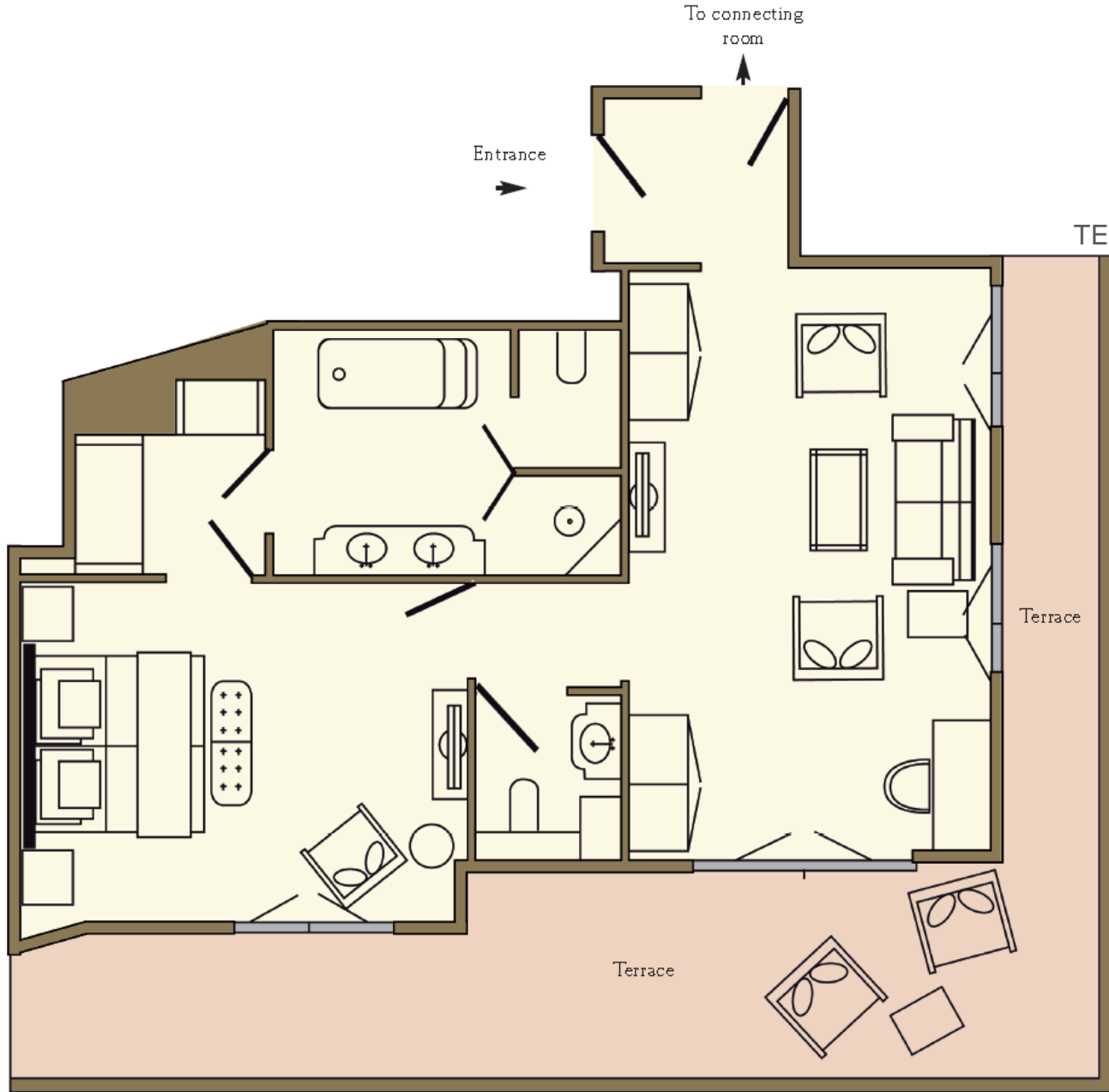
TERRACE EIFFEL TOWER VIEW SUITE



**Shangri-La hotel**

PARIS

**TERRACE EIFFEL TOWER VIEW SUITE  
FLOOR PLAN**



Panoramic  
view of Paris



Full Eiffel tower view

**TERRACE EIFFEL TOWER VIEW SUITE – FLOOR PLAN**



## TERRACE EIFFEL TOWER VIEW

### SUITE FEATURES

## 6<sup>TH</sup> FLOOR

606 - Terrace Eiffel Tower view Suite  
and 7 additional rooms and suites



- Unique one-bedroom Suite overlooking the Eiffel Tower, with separate living area and sofa bed for up to 2 children, located on the 6<sup>th</sup> floor of the Hotel.
- Guaranteed 25-sqm / 270-sqft terrace offering unique views on the Eiffel Tower and the city of Paris.
- Natural wood and marquetry, coupled with French-style décor in shades of ecru, gold and white.
- The Terrace Eiffel Tower view Suite can connect to an Eiffel Tower view room to create a 2-Bedroom Suite.
- The full 6<sup>th</sup> floor can also be privatized offering the "Terrace Eiffel Tower view Suite" and 7 additional rooms and suites.

TERRACE EIFFEL TOWER VIEW SUITE – FLOOR PLAN – 6<sup>TH</sup> FLOOR



TERRACE EIFFEL TOWER VIEW SUITE - 70 sqm / 750 sqf



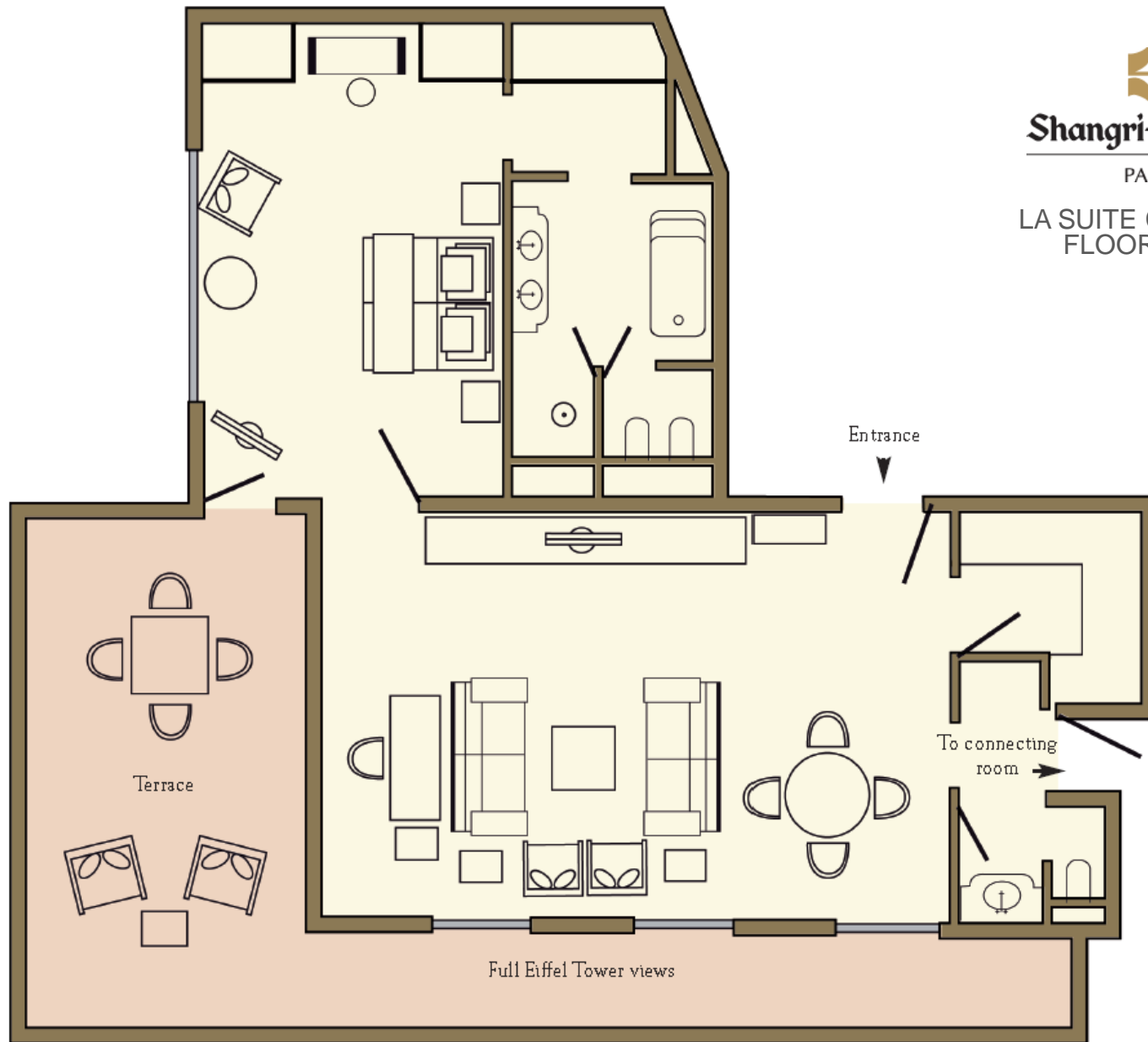
# LA SUITE CHAILLOT



Shangri-La hotel

PARIS

LA SUITE CHAILLOT  
FLOOR PLAN



LA SUITE CHAILLOT – FLOOR PLAN

## LA SUITE CHAILLOT FEATURES

- Situated on the fifth floor of Shangri-La Hotel, Paris, “La Suite Chaillot” was named after the Chaillot Hill upon which the hotel and its chic neighbourhood are located.
- Displaying a contemporary interior design, “La Suite Chaillot” has a total of 110-sqm (1,175-sqft) of living space, including one bedroom, a large living area with a dining table for four to six guests and a 35 sqm (375 sqft) wraparound terrace overlooking the Eiffel Tower and the Paris skyline.
- Resembling more a luxury apartment than a hotel suite, “La Suite Chaillot” can also connect to an Eiffel Tower view room to create a 2-Bedroom Suite.

## 5<sup>TH</sup> FLOOR

507 - La Suite Chaillot  
and 9 additional rooms and suites



LA SUITE CHAILLOT – FLOOR PLAN – 5<sup>TH</sup> FLOOR



LA SUITE CHAILLOT – BEDROOM



LA SUITE CHAILLOT – LIVING AREA



LA SUITE CHAILLOT – BEDROOM





LA SUITE IMPERIALE



  
**Shangri-La hotel**  
 PARIS  
**LA SUITE IMPERIALE**  
**FLOOR PLAN**

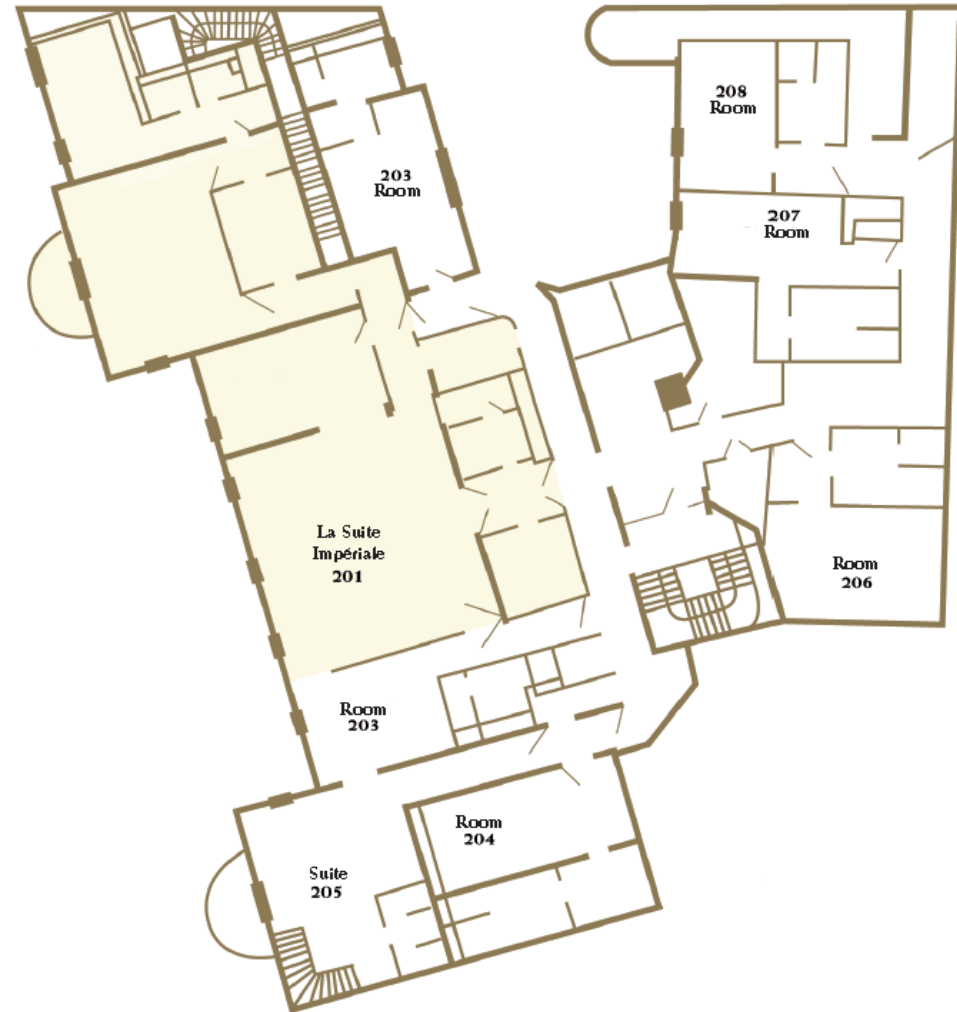
LA SUITE IMPERIALE – FLOOR PLAN

## LA SUITE IMPERIALE FEATURES

- Situated on the second floor on the avenue d'Iéna side of the palace, the hotel's largest suite is located in the former private apartments of Prince Roland Bonaparte.
- A jewel in the hotel's crown, "La Suite Impériale" is the only one of the hotel rooms or suites to be listed with "Monuments Historiques", for its beamed ceilings, castings, gilt work and decorative carvings.
- The suite features five-metre-high (16-foot-high) ceilings, one bedroom, a large living room with a private dining area for up to eight guests and a private kitchen.
- The suite can be connected to two rooms, for a total living space of 350sqm (3,770sqft) and three bedrooms.
- The full 2nd floor can also be privatized offering "La Suite Impériale" and 7 additional rooms and suites.

## 2<sup>ND</sup> FLOOR

201 - La Suite Impériale  
7 additional rooms and suites





LA SUITE IMPERIALE – LIVING AREA



LA SUITE IMPERIALE – DINING AREA



LA SUITE IMPERIALE – BATHROOM



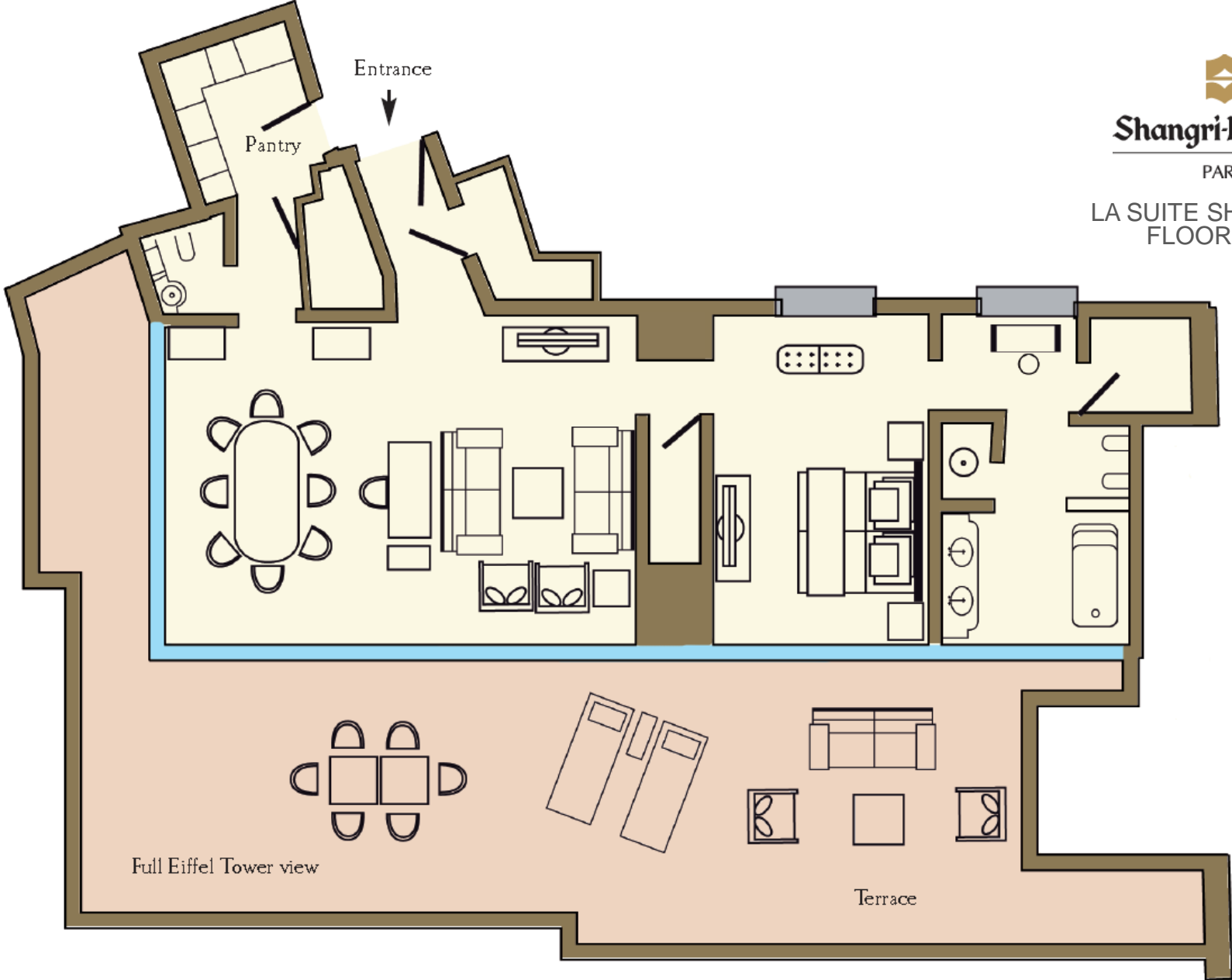
# LA SUITE SHANGRI-LA



**Shangri-La hotel**

PARIS

LA SUITE SHANGRI-LA  
FLOOR PLAN



LA SUITE SHANGRI-LA – FLOOR PLAN

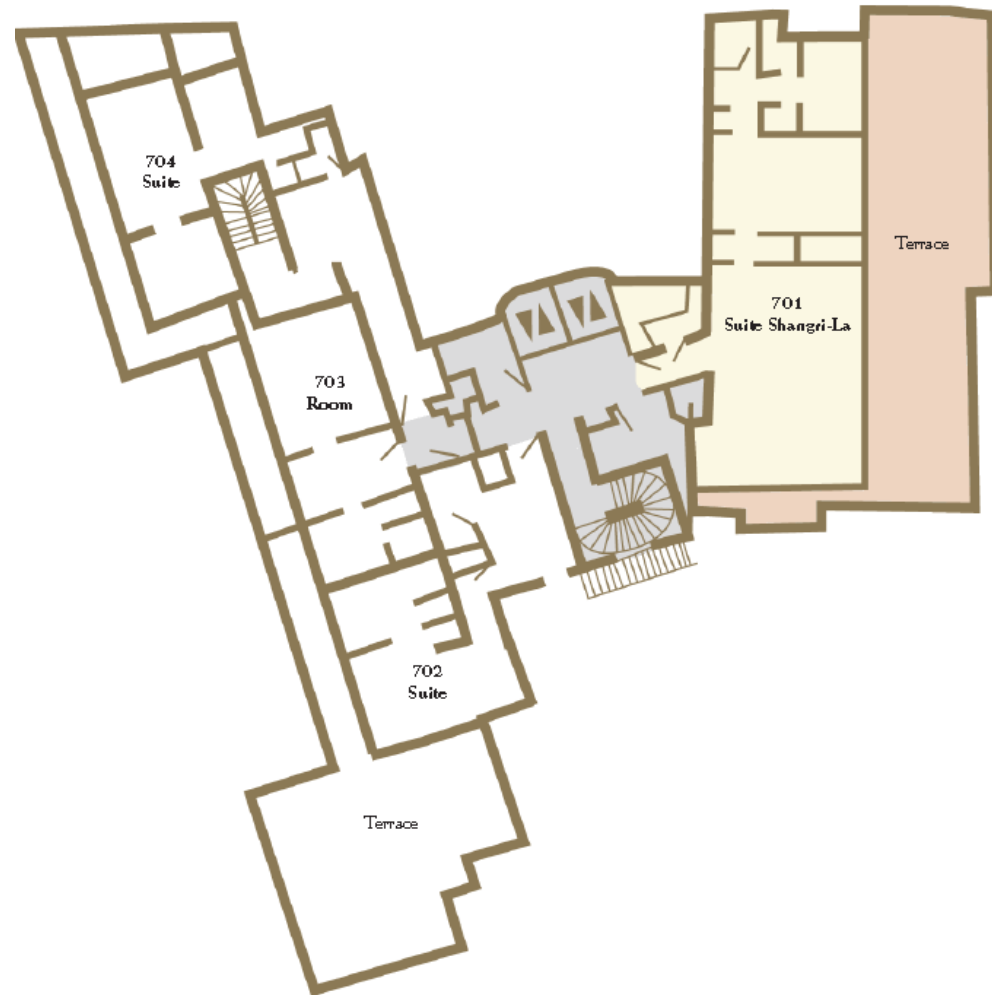


## LA SUITE SHANGRI-LA FEATURES

## 7<sup>TH</sup> FLOOR

701 - La Suite Shangri-La  
and 3 additional rooms and suites

- Perched on the top floor of the hotel, “La Suite Shangri-La” modern architecture is balanced with classic French furnishings.
- “La Suite Shangri-La” has a total of 120-sqm (1,290-sqft) of living space, including one bedroom, a large living area with a dining space for up to 8 guests and a spacious 100-sqm (1,076-sqft) terrace offering a sweeping panoramic view over the city.
- The breathtaking vantage point offers a bird’s-eye view of Paris’ most iconic sights, from Montmartre’s Sacré Coeur to the Trocadero, passing over the Grand Palais, Notre Dame, the Alexandre III bridge and, of course the most famous of all, the Eiffel Tower and the River Seine.
- With a 14-metre-long (46-foot-long) panoramic window on the suite’s southern face, the Eiffel Tower can be admired from virtually anywhere in the suite or on its teak and glass terrace.
- The full 7th floor can also be privatized offering “La Suite Shangri-La” and 3 additional rooms and suites.





LA SUITE SHANGRI-LA – LIVING AREA



LA SUITE SHANGRI-LA – LIVING AREA



LA SUITE SHANGRI-LA – BEDROOM



LA SUITE SHANGRI-LA – TERRACE AT NIGHT



LA SUITE SHANGRI-LA – TERRACE



DINING

# Glamorous Dining That Takes Your Breath Away

At Shangri-La Hotel, Paris, diversity and quality come together to satisfy even the most discerning of palates.

Guests can opt for a casual dining experience under a stunning glass cupola at La Bauhinia, a French gourmet dinner at L'Abeille, which was honoured with 2 stars in the Michelin Guide, or an authentic Chinese culinary journey at the first Shang Palace signature restaurant in Europe, awarded 1 star in the Michelin Guide.

Restaurant / Bar	Capacity	Cuisine
La Bauhinia	80	French and South-East Asian contemporary cuisine
L'Abeille 2* Michelin	40	Gourmet French restaurant
Le Shang Palace 1* Michelin	80	Traditional Chinese, Cantonese-inspired restaurant
Le Bar and it's Lounges	54	1 bar and 3 historic lounges wich propose a tasty and voluntarily simple menu







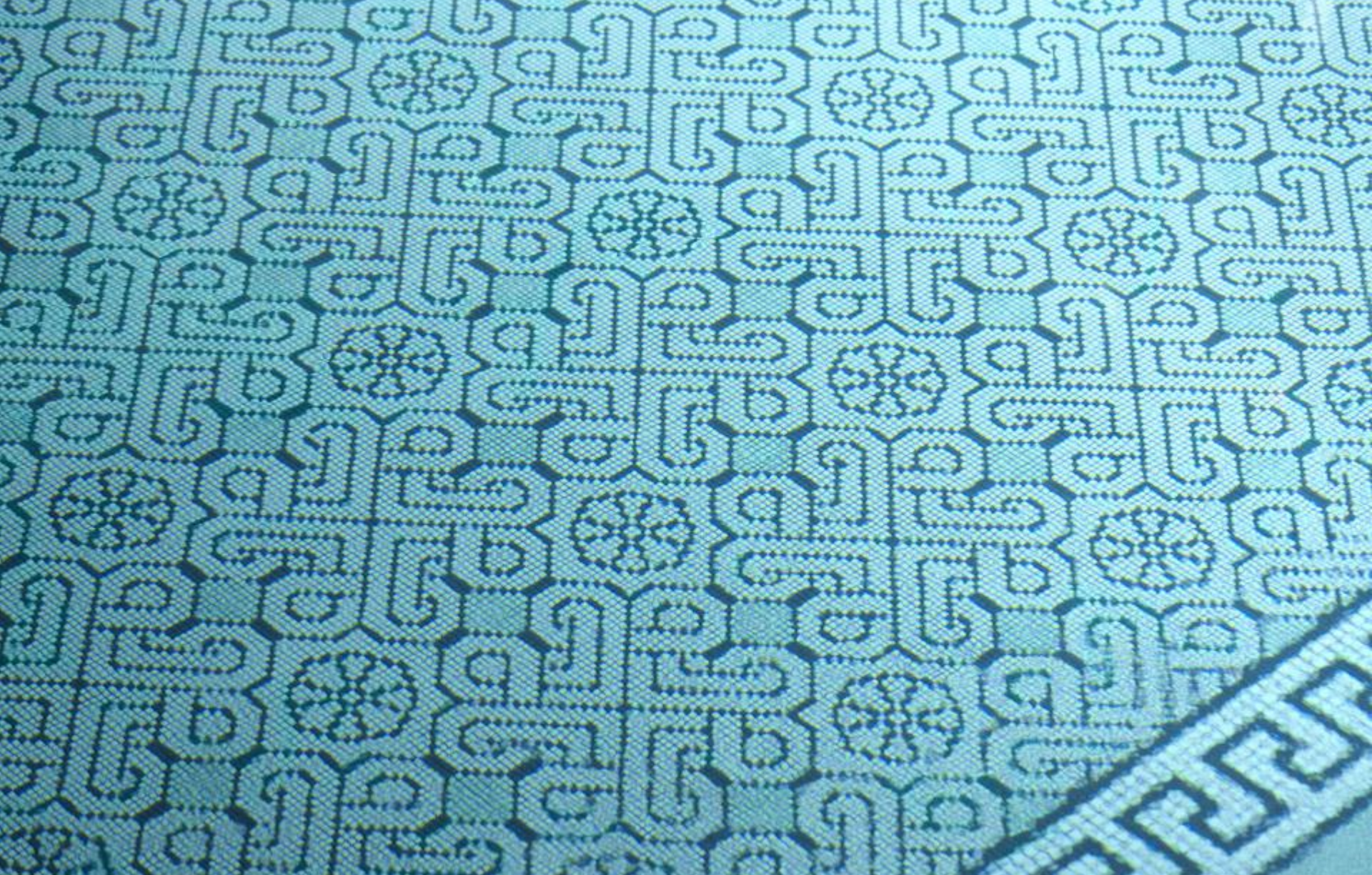
LA BAUHINIA – ALL DAY DINING RESTAURANT



LE SHANG PALACE – 1\* MICHELIN STAR CANTONESE RESTAURANT



L'ABEILLE – 2\* MICHELIN STAR FRENCH RESTAURANT



CHI, THE SPA



THE WELLNESS RETREAT – 2 Treatment Rooms



THE WELLNESS RETREAT – Fitness Center

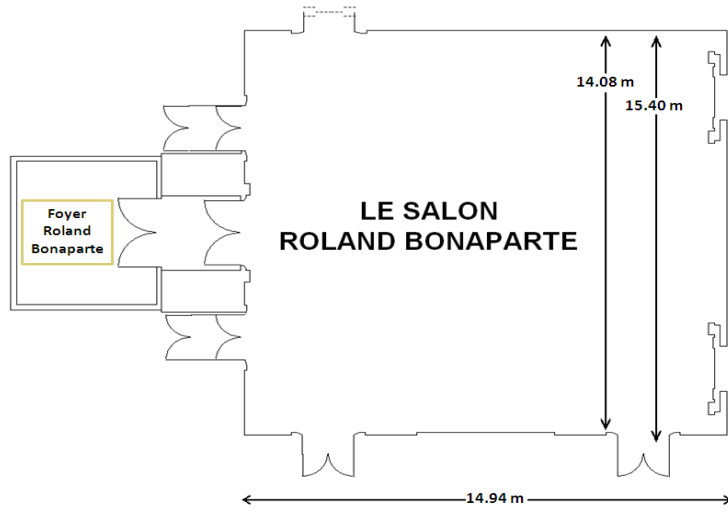


HISTORICAL MEETING SPACES

# 4 FUNCTION ROOMS

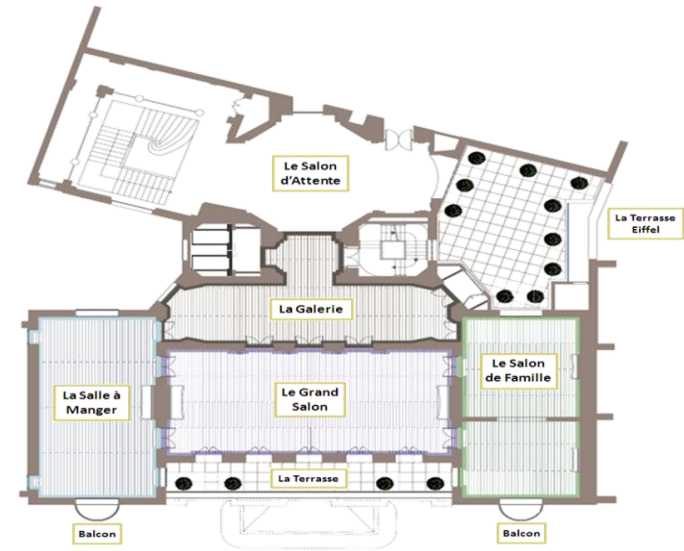
## TOTAL MEETING SPACE OF 850 SQM – 9150 SQFT

*Roland Bonaparte Function room plan*




*Capacities*

*Historical Function room plan*



*Capacities*

- Dimensions: 15.80 meters x 15.50 meters
- 250 square meters (2583 square feet)
- 5,72 meters of ceiling height
- Entirely soundproofed

	310		133		54
Cocktail		Classroom		U-shape	
	200	Banquet + Dancefloor	150		260
Banquet				Theatre	

- 520 square meters (5576 square feet), including the Gallery
- 6.85 meters of ceiling height
- A floor that can be entirely privatized
- A private terrace with an Eiffel Tower view

	300		500
Banquet		Cocktail	



# 4 FUNCTION ROOMS

## TOTAL MEETING SPACE OF 850 SQM – 9150 SQFT

### *Function Spaces Capacities*

Venue	Theatre	Banquet	Cocktail	Classroom	U-Shape	Oval table	Cabaret	Size m2	Size ft2	Ceiling Height m	Ceiling Height ft
La Salle A Manger	90	90	100	56	40	32	56	100	1076	6.85	22.47
Le Grand Salon	130	110	180	90	52	48	64	140	1506	6.85	22.47
Le Salon de Famille	40	40	80	24	20	22	40	100	1076	6.85	22.47
<i>Total Historical</i>	•	270	500	•	•	•	•	520	5597	6.85	22.47
Le Salon Roland Bonaparte	270	200	310	147	54	38	144	250	2690	5.72	18.76





ESCALIER D'HONNEUR – 1 Floor Historical Function Spaces



LE GRAND SALON



LA SALLE A MANGER



LE SALON DE FAMILLE



LE SALON ROLAND BONAPARTE



LE SALON ROLAND BONAPARTE



YOUR WEDDING AT SHANGRI-LA HOTEL, PARIS





Around the Hotel

# 24/7 Guest Services & Concierge Team

## Catering to your every need

Shangri-La Hotel, Paris, offers an extensive range of services and facilities, supported by an experienced staff

Our Head Concierge, M. Tony Le Goff and its entire team will be delighted to assist you in making reservations in other Parisian restaurants, booking tickets for museums, shows or any other type of entertainment

Romantic River Seine Cruise in a Riva Boat

Fireworks & private dinner at the Château de Vaux-le-Vicomte

Private tour of the Palace of Versailles

Romantic escapade in Deauville, Normandy

Private Shopping Experience in Paris most luxurious boutiques...

Here are a few example of what our teams can organize for you

Should there be any further information you would like to share with us, we would be more than happy to offer you our assistance



# Museums

## **Musée des Arts asiatiques**

Guimet Museum, founded in 1889 in a beautiful neo-classical hotel, has more than 45,000 art objects, which earned it the title of today's National Museum of Asian Arts. Collections of Art and Archaeology cover a vast geographical area (from Afghanistan to Japan) and time period (the second millennium BC to the nineteenth century).

*6, Place d'Iéna, 75016 Paris*

## **Palais de Tokyo**

Built for the Universal Exhibition of 1937, it now houses the "Site for Contemporary Creation" that combines fashion, music, art, design, film and literature, in an area of 8000 m2.

*13, Avenue du Président Wilson, 75116 Paris*

## **Musée d'Art Moderne de la Ville de Paris**

It presents the main forms of modern art movements the beginning of the century to the present: Fauvism, Cubism, Dadaism, surrealism, abstraction, conceptual art ... Exhibitions on major movements and artists of the twentieth century are regularly organized.

*11, Avenue du Président Wilson, 75016 Paris*

## **Musée du Quai Branly**

The Museum offers 3500 works of in permanent and temporary exhibition spaces, surrounded by a garden of 1.8 hectares. The green wall outside the museum with flowers, shrubs, and plants from around the world is also one of the major attractions of the museum.

*55, Quai Branly, 75007 Paris*



# Monuments

## **Eiffel Tower**

Champs de Mars, 75007 Paris

The iconic Parisian landmark built for the 1889 World Expo celebrating the 100 year anniversary of the French Revolution was, at the time, the tallest tower in the world standing 324 meters tall with 1665 steps. Its architect, Gustave Eiffel, rightfully said: "I should be jealous of the Tour, it is more famous than me."

## **Esplanade des Invalides**

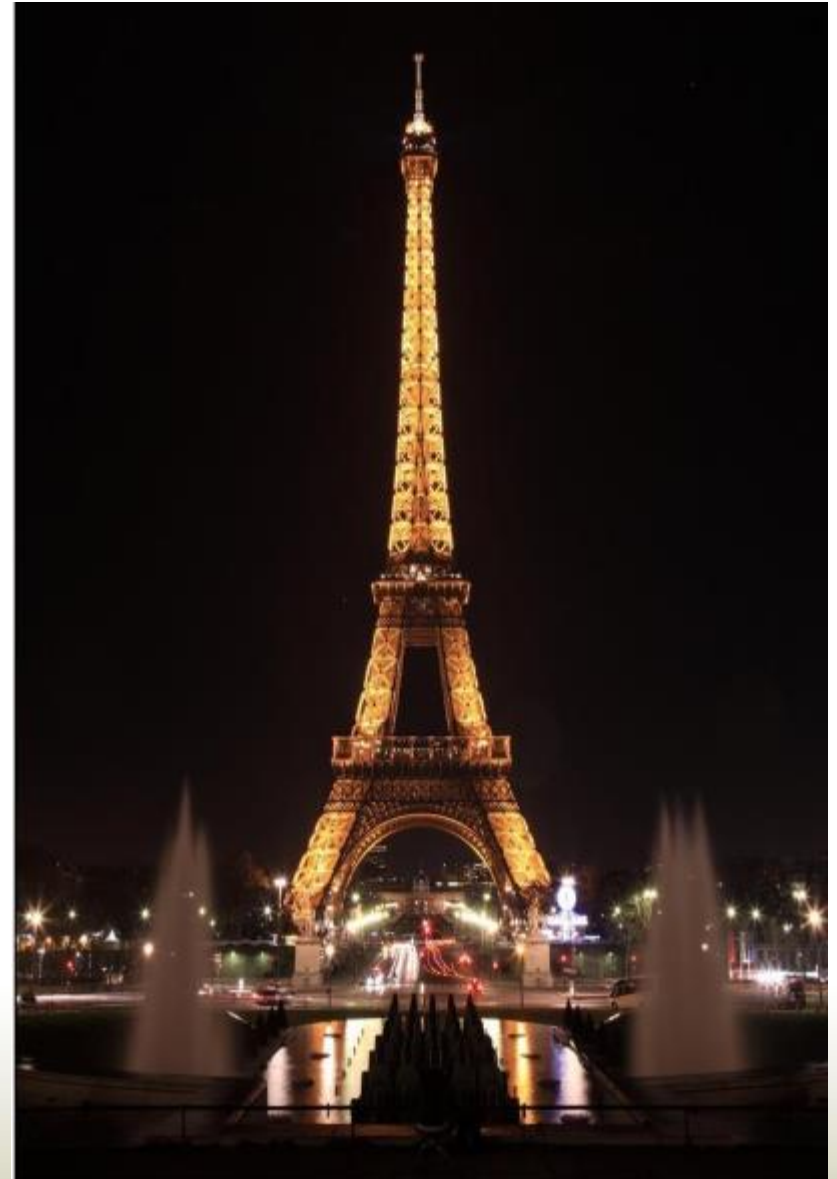
Esplanade des Invalides, 75007 Paris

The famous dome, which was initially used as a mausoleum for the kings of France, became the shrine to the Emperor Napoleon I, since the return of his ashes to the monument in 1840. Today, the North West wing holds the Museum of the Army and various other rooms (Department of Museums, Cathedral, Church of Saint Louis, Historial Charles de Gaulle). Its vast esplanade extends to the Seine.

## **Place du Trocadéro**

Place du Trocadéro, 75016 Paris

The Trocadero Palace was built during the Exhibition of 1878. It survived until 1937, when it was transformed into the Palais de Chaillot for the Exposition des Arts et Techniques. The pavilion now houses the Maritime Museum and the Museum of French Monuments.



# Shopping Areas



## **Rue de Longchamp**

The Rue de Longchamp is a street in the 16th district of Paris, named after the Royal Abbey of Longchamp.

## **Avenue Victor Hugo**

Avenue Victor Hugo is an avenue in the 16th arrondissement of Paris, starting Place Charles de Gaulle and ending Tattegrain Place (Avenue Henri-Martin).

## **Place de Mexico**

Formerly "Rond Point de Longchamp", renamed in 1957, it is located at the crossroads of rue de Longchamp, rue des Belles-Feuilles, rue des Sablons, Street Decamps and Avenue d'Eylau. It has at its center a sculpture of Agueda Lozano offered by Mexico in 2006.

## **Avenue Montaigne:**

One of the finest avenues of Paris, between the Champs Élysées and the Pont de l'Alma. It is lined with luxurious buildings and prestigious boutiques of fashion designers in Paris and Europe.

## **Avenue des Champs-Élysées:**

The Avenue des Champs-Élysées is not only known for its stores (Vuitton, Ladurée, Planet Hollywood, Le Lido, Fouquet's, and more...) but also for its spectacular view extending from the Louvre and the Place de la Concorde all the way to the Arch of Triumph and the Arch of La Défense. Today the Avenue has become a shop window for the world, lined with cafés, cinemas and countless stores and boutiques. A symbol of Parisian beauty recognized throughout the world.

## **Rue de Passy:**

The Rue de Passy (previously called Main Street of Passy) is in the 16th arrondissement of Paris and named after its position in the old town of Passy, which was annexed to the municipality of Paris in 1860. It leads from the Place de la Muette to the place of Costa Rica (near the Trocadero Palace). 700 meters long, it is a busy shopping street with the only cinema in the borough. There is also a large shopping mall: Passy Plaza,

# Farmers Markets

## What we regularly buy there:

- ❖ Fruits, especially what is in season, as the farmers have just picked them
- ❖ Vegetables: Prices are good and the vegetables are fresh and delicious.
- ❖ Flowers: Prices are the best in the quartier with wide selections
- ❖ Fish: The fish merchants drive down early from Brittany and Normandy with their fresh catches. You can buy everything from fresh lobster from Brittany, to many kinds of oysters to freshly caught sole and others. All vendors are very helpful, so if you're not sure what kind of oyster (they'll ask if you want them large or small, salty or less so, etc) don't hesitate to ask!
- ❖ Cheese: It's a staple of French life!
- ❖ Italian pasta: Even Italian vendors come here to sell their homemade pasta, sausages and oils. They love it if you can speak a few words of Italian.
- ❖ Olives and salads: Each of the markets in this area has different vendors who sell wide selections of olives, tapenades and side dishes. Each has his or her own special recipe. We enjoy exploring and trying them all.
- ❖ Simple wines: Nothing fancy, but you can find inexpensive table wines here.
- ❖ Bread: Good bread, especially whole wheat and grain breads.
- ❖ Snails and stuffed mussels: They are delicious and excellent as a first course.

## The Market: Avenue du President Wilson.

This Paris open air market is a wonderful sightseeing idea when in Paris. It takes place every Wednesday and Saturday morning, from about 7am to 2:30pm. One of our favorite merchants is **Joel Thiebault**, who sells delicious vegetables and claims that Iena has the biggest open market in Paris. The selection of food is tremendous and we've never managed to get to the end.

It's hard to fully describe the variety and quality of the food here without seeing it for yourself! The selection ranges from produce to meats, fish, flowers, pasta, breads, sweets and even house wares. Customers have been coming here for years and frequent their favorite vendors. You frequently hear: 'Bonjour Madame! What a pleasure to see you this week !Today we have delicious tomatoes ! I recommend you try one!





SHANGRI-LA HOTEL GROUP

# Shangri-La Hotels and Resorts in the World!



- 82 Shangri-La Hotels

- 10 Hotels Jen

- 4 Traders Hotels

- 2 Kerry Hotels





# 2015 Shangri-La Hotel, Paris Awards



*"Citizens' Initiative" trophy at the Defis RSE "CSR Challenges" awards in the context of its partnership with NGO Pl4y International - 2015*



*Conde Nast Traveler's Gold List 2015: the World's Best Hotels  
Conde Nast Traveler's Gold List 2015: the Best Hotels Meals*



*Traveller's Choice 2015 -  
Luxury Category on  
TripAdvisor*



*"World Luxury Hotel Awards" - Luxury Romantic Hotel - 2015*



*Robb Report - Elite Suites of Europe 2015*



*Condé Nast Johansens - Best Dining Experience : L'Abeille - 2015*



**Shangri-La hotel**

---

PARIS