

F A C T S A N D I N F O R M A T I O N



THE PENINSULA

P A R I S



The Peninsula Hotels made its grand entrance into Europe with The Peninsula Paris, setting new standards in design, luxury and comfort. The latest chapter of Peninsula excellence brought an unprecedented new level of distinction to the City of Light.

The Peninsula Paris is located in a late 19th century classic Haussmann style building, which first opened as one of Paris's most luxurious “grand hotels” in 1908. Steeped in history, the property has been meticulously restored and discreetly modernized with the ultimate in 21st century convenience. The Peninsula houses 200 luxurious rooms, including 34 suites, which are among the most spectacular in the city.

LOCATION

Perfectly situated at 19 Avenue Kléber, just steps from the Arc de Triomphe, The Peninsula sits in the heart of Paris within walking distance of some of the world’s most famous monuments, museums and luxury shopping districts.



ACCOMMODATION

Inspired by Paris’ rich heritage and elegance, all rooms and suites are styled in grey and cream soft tones, accented with high-gloss lacquered furnishings, offering a sense of luxury and space. Artfully combining distinct Parisian influences with Peninsula signature functionality, our rooms showcase classical craftsmanship yet with a taste of timeless and modern aesthetic.

All guest rooms and suites at The Peninsula Paris offer the following complimentary features:

- High-speed wired and wireless internet access
- VoIP long distance calls
- Interactive digital bedside panels preset in one of eleven languages
- Coffee and tea-making facilities
- Soft drinks from the Minibar
- Audio visual center featuring a flat-screen Blu-Ray 3D LED swivel television with internet TV and an iPod/iPad docking station, memory card reader, and sound bar speaker system with subwoofer
- Oscar de la Renta bathroom amenities
- Nail dryer
- Safety deposit boxes in all rooms
- Flat-screen HD TV: 40 international satellite and terrestrial TV channels
- Complimentary HD movies
- All-in-one fax/scanner/printer/copier with office automation and wired and wireless connections to personal electronic devices and the digital bedside panel
- Multi-pin, multi-system power sockets
- Bedside multi-adapter charger
- Hands-free telephone, TV, digital radio and mood lighting in bathrooms





The Lobby Restaurant



LiLi



L'Oiseau Blanc

DINING

With its collection of eclectic restaurant and dining options, The Peninsula Paris promises to bring a new dimension of dining to the City of Lights. Open daily, six venues showcase the very best of France and The Peninsula – The Lobby, LiLi Cantonese restaurant, The Kléber Terrace, The Kléber Bar, The Kléber Lounge and L'Oiseau Blanc rooftop restaurant, bar and terrace, offering stunning views over Paris.

The Lobby

This former grand dining room has been meticulously restored to reflect the glory of the Belle Epoque era. It is the perfect setting to experience The Peninsula's famed Afternoon Tea, accompanied by the soothing notes of a jazz trio. The Lobby offers an all-day international menu, ideal for a break and a bite to eat.

Hours

7:00am-10:30pm

La Terrasse Kléber

As one of Paris' largest covered terraces, La Terrasse Kléber is café society at its best, with direct pedestrian access from Avenue Kléber to the hotel. The landscaped venue, with its futuristic glass and steel canopy, serves international and Cantonese dishes, drinks and snacks throughout the day – an ideal spot to relax, see and be seen.

Hours

7:00am-10:30pm

LiLi

With a stunning interior inspired by the drama of Chinese and French opera, LiLi presents authentic Cantonese cuisine prepared by award-winning Hong Kong chefs. Gastronomic highlights include refined dim sum and sophisticated seasonal dishes. LiLi also specialises in Chinese tea, serving over 20 types of leaves, while a private Chefs' Table offers the best seats in the house for viewing the outstanding performances in the kitchen.

Hours

Lunch: 12:00 (noon)-2:30pm

Dinner: 7:00pm-10:30pm

L'Oiseau Blanc

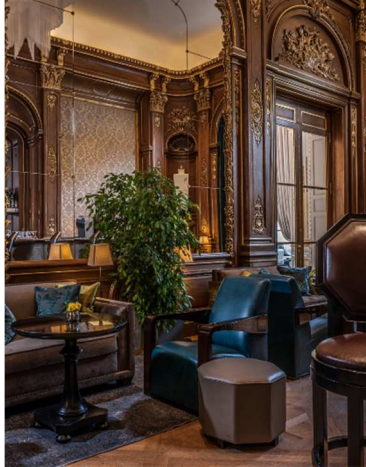
Located on the sixth floor of the hotel and serving up stunning views over Paris' most iconic monuments, complete with a retractable roof, is one of Paris' most stunning and unusual restaurants.

Hours

Lunch: 12:00 (noon)-2:30pm

Dinner: 7:00pm-10:30pm

Bar/Terrace: 6:00pm-1:00am



Bar Kléber

Bar Kléber

Oak paneling, gilded moldings, soaring ceilings and giant mirrors mark this historic bar, which offers an extensive collection of cocktails, fine wines, Champagnes, spirits and international whiskies. Double-height windows lead out on to La Terrasse Kléber for drinks al fresco.

Hours

3:00pm-1:00am

The Lounge Kléber

Discreet lounge with an intimate atmosphere, ideal for relaxing and savoring a cigar over a drink, together with exclusive cigar storage cabinets for regular guests.

The two paintings on the ceiling of the lounge – representing music and science and geography respectively – were restored by Cinzia Pasquali, who has restored paintings by Leonardo da Vinci at the Louvre, and also worked at the Palace of Versailles.

Hours

3:00pm-1:00am



The Lounge Kléber

In-Room Dining

The Peninsula prides itself in offering more than just bedrooms to its guests, but also providing maximum comfort and all the necessities to make you feel at home, particularly when it comes to food. In-Room dining staff are on hand 24 hours a day to deliver dishes to your door from an endless menu featuring everything from international favourites to local specialities.

Hours

24 Hours

MEETINGS AND EVENTS

The Peninsula houses a selection of the most elegant banquet and function spaces in Paris, including a traditional Parisian-style salon with a pre-function area housing up to 100, and three function rooms for smaller events. Featuring grand high ceilings, contemporary décor and state-of-the-art technology, these glamorous venues guarantee seamless meetings and events.



La Rotonde

	<u>Auguste</u>	<u>Claude</u>	<u>Lucien</u>	<u>Claude Chayet +</u>	
<u>Venue</u>	<u>Etoile</u>	<u>Boppe</u>	<u>Chayet</u>	<u>Lucien Paye</u>	
Surface	172 m ²	70 m ²	30 m ²	30 m ²	60 m ²
Théâtre	150	70	20	20	55
Classe	81	30	12	12	24
U shape	54	27	9	9	21
Boardroom	60	24	12	12	24
Cabaret	66	18	x	x	18
Banquet	110	30	10	10	30
Cocktail	200	100	30	30	60



The Peninsula Spa

THE SPA

Unwind in a relaxation oasis offering deeply personalised spa experiences over 1,800 square meters of the ultimate in luxury and tranquility. A selection of signature treatments that blend Asian, European and Ayurvedic philosophies creates a unique holistic experience. Our professional team creates tailored treatments for our guests featuring The ESPA Collection which promises instant, lasting results, every day and utilizing French luxury skincare line Biologique Recherche.

The Spa facilities include:



The Reception

- 6 private treatment rooms
- 2 VIP couples' suites
- Separate men's and women's relaxation lounges
- Heat experience facilities within the changing rooms
- Consultation area and tea lounge
- ESPA and Biologique Recherche products and treatments
- 20 m indoor pool
- State-of-the-art gym equipment including two rooms for cardio and strength machines and free weight training.
- Separate changing room, sauna and relaxation areas for men and women



Superior Suite Dressing Room

OTHER FACILITIES AND SERVICES

- 24-hour concierge
- 24-hour room service
- 24-hour laundry and valet services
- Garage and valet parking
- Vintage 1934 Rolls-Royce Phantom II
- Rolls-Royce Extended wheelbase Phantom
- Two MINI Cooper S Clubman vehicles
- The Peninsula limousine service for airport transfers and hourly hire